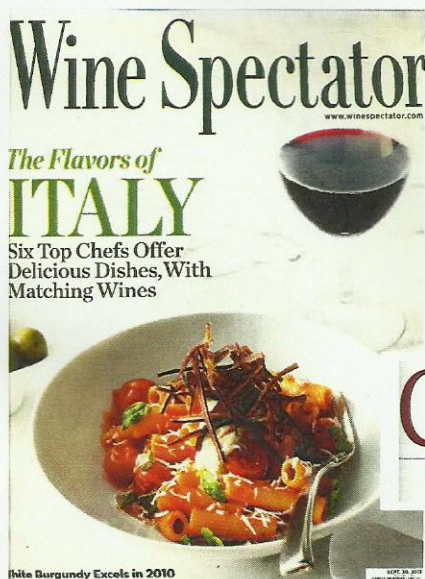


Château  
de la Roulerie



Wine Spectator,  
Sept. 30, 2013

## GRAPEVINE

WINE | FOOD | PEOPLE | COLLECTING

SAVVY SHOPPER

### SENSE OF PLACE

This selection of *terroir*-based whites from France is anchored by two *cru* Beaujolais from Moulin-à-Vent, where structured reds are made from Gamay.

### CHÂTEAU DE LA ROULERIE

**Coteaux du Layon 2011 (92,**

**\$17)** Juicy; quince, green fig,

honeysuckle, Jonagold apple